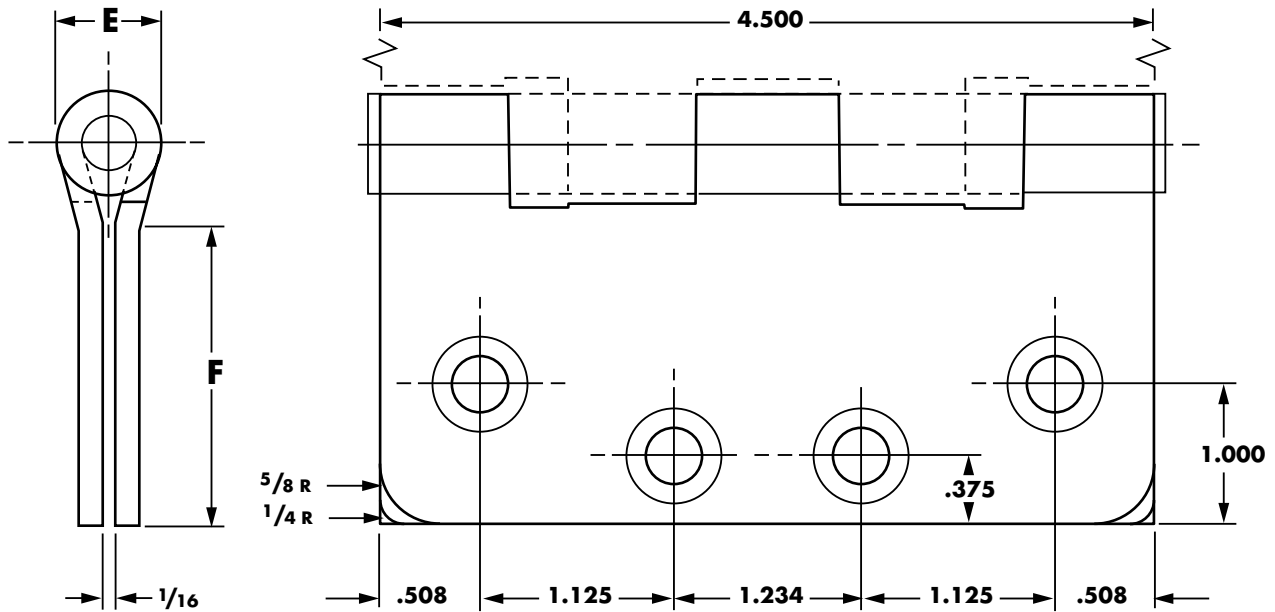


**FULL MORTISE TEMPLATE BUTT HINGES**

Sizes: 4 1/2 x 4, 4 1/2 x 4 1/2, 4 1/2 x 5, 4 1/2 x 6, 4 1/2 x 7 & 4 1/2 x 8"



DO NOT SCALE

CLASS NUMBER		Gauge of Metal	(E) Outside Diameter	DISTANCE FROM EDGE OF LEAF TO SWAGE LINE (F)					
Steel Hinges	Nonferrous Hinges			4 1/2 X 4	4 1/2 X 4 1/2	4 1/2 X 5	4 1/2 X 6	4 1/2 X 7	4 1/2 X 8
F179	F191	.134	.605	1 5/8	1 29/32	2 5/32	2 21/32	3 5/32	2 21/32
FBB179	FBB191	.134	.625	1 5/8	1 25/32	2 3/32	2 9/16	—	—
1900	1960	.134	.540	1 5/8	1 13/16	—	—	—	—
CB1900	CB1960	.134	.540	1 5/8	1 13/16	—	—	—	—
FBB168	FBB199	.180	.698	1 15/32	1 23/32	1 31/32	2 15/32	2 31/32	3 15/32
CB1901	CB1961	.180	.690	—	1 13/16	—	—	—	—
2060	—	.134	.680	1 5/8	1 27/32	—	—	—	—
IHTCB1901	IHTCB1961	.180	.690	1 15/32	1 13/16	—	—	—	—
CB179	CB191	.134	.625	1 5/8	1 25/32	2 3/32	2 19/32	—	—
CB168	CB199	.180	.698	1 15/32	1 23/32	1 31/32	2 15/32	2 31/32	3 15/32
IHTCB168	IHTCB199	.180	.698	—	1 23/32	—	—	—	—

Machine Screw Size — 1/2 x 12-24 F.H.

Wood Screw Size — 1/4 x No. 12 F.H.

Template hinges of the hospital type conform to above screw hole location.

Hospital type hinges are designated by prefix "HT" to class number. (except on #2060.)

This template conforms with ANSI standard A156.7

Also available in RD2060 1/4" radius corner and RD2068 5/8" radius corner.

NOTE: Prefix IHT indicates institutional hinge.